

# ABSOLUTE PUBLIC LAND AUCTION

2,607.67 ACRES  
19 TRACTS

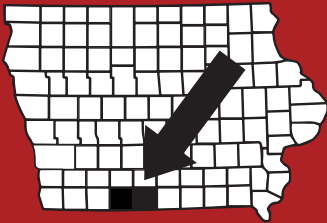


## RINGGOLD & DECATUR COUNTY, IA

THURSDAY, MARCH 5TH, 2026

10:30AM

HOMESTEAD HALL/RINGGOLD CO FAIRGROUNDS  
2214 US-169  
MOUNT AYR, IA 5085



**RICE**  
AUCTION COMPANY

**JAKE RICE**

641-202-3315

JAKE@RICEAUCTIONCO.COM

**CONTACT**  
**JIM HUGHES**  
REAL ESTATE  
712-527-3114

**ALLAN HUGHES**

402-672-3621

INFO@JIMHUGHESREALESTATE.COM

[www.RiceAuctionCompany.com](http://www.RiceAuctionCompany.com)

**SELLER: HANK SMITH INC.**

# TRACT #11 74.55 Net Taxable Acres



## FSA INFORMATION

**Farm #11 Tract #1431**

**Farmland: 75.14**

**Cropland: 68.39**

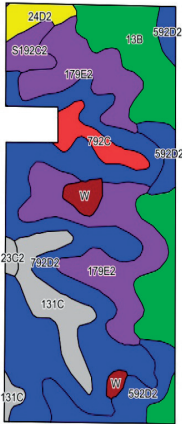
**CSRII: 30.1**

**Brief Legal: 13-68N-28W**

Athens Township, Ringgold County, IA

**Taxes: \$996 or \$13.36/acre**

**Row Crop Farm**



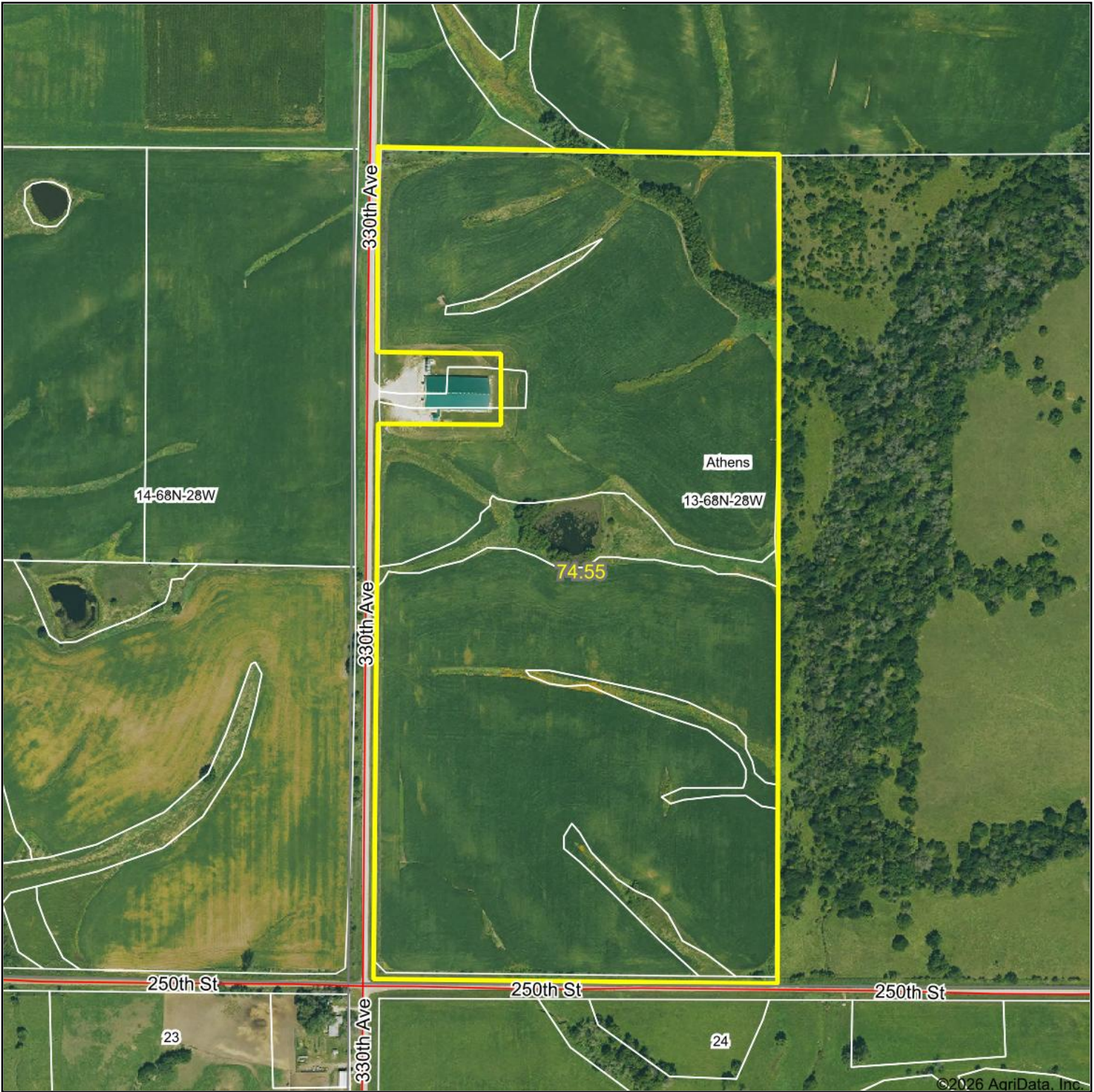
## DIRECTIONS TO THE FARM:

1 mile South of Kellerton, IA on J45, then East on J45 for 0.4 miles, then 1/2 mile South on 330th Ave. Signs will be posted!



For videos or to register to bid online, visit [www.RiceAuctionCompany.com](http://www.RiceAuctionCompany.com)

# Aerial Map



©2026 AgriData, Inc.

Boundary Center: 40° 41' 7.45, -94° 1' 54.83



**13-68N-28W**  
**Ringgold County**  
**Iowa**

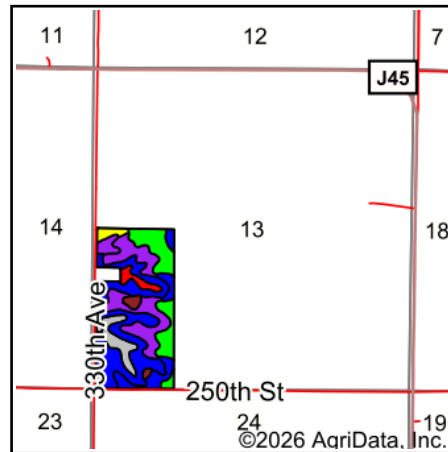
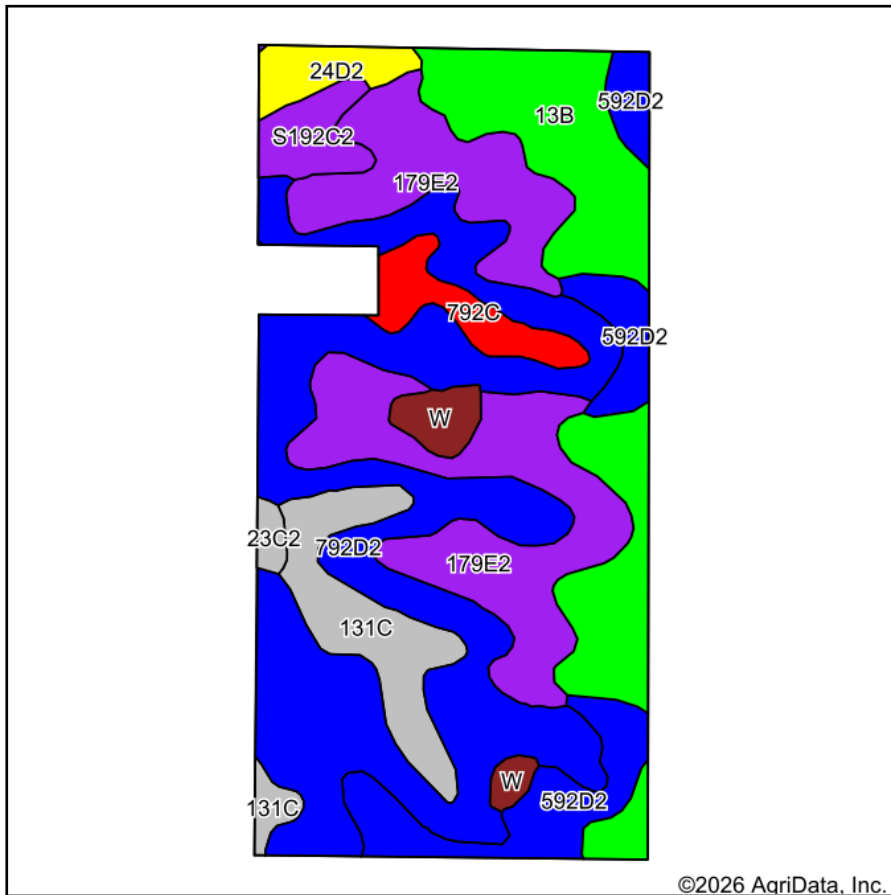


Maps Provided By:  
 **surety**<sup>®</sup>  
CUSTOMIZED ONLINE MAPPING  
© AgriData, Inc. 2025      www.AgriDataInc.com

1/13/2026

Field borders provided by Farm Service Agency as of 5/21/2008.

# Soils Map



State: **Iowa**  
 County: **Ringgold**  
 Location: **13-68N-28W**  
 Township: **Athens**  
 Acres: **74.55**  
 Date: **1/13/2026**



Soils data provided by USDA and NRCS.

Area Symbol: IA159, Soil Area Version: 31

Code	Soil Description	Acres	Percent of field	CSR2 Legend	Non-Irr Class *c	CSR2**	*n NCCPI Overall	*n NCCPI Corn	*n NCCPI Small Grains	*n NCCPI Soybeans
792D2	Armstrong clay loam, 9 to 14 percent slopes, moderately eroded	24.65	33.1%		Ive	7	58	58	50	41
179E2	Gara loam, 14 to 18 percent slopes, moderately eroded	16.78	22.5%		Vle	24	62	62	49	44
13B	Olmitz-Zook-Humeston complex, 0 to 5 percent slopes	12.49	16.8%		llw	78	79	74	54	73
592D2	Mystic clay loam, 9 to 14 percent slopes, moderately eroded	6.86	9.2%		Ive	10	67	67	61	50
131C	Pershing silt loam, 5 to 9 percent slopes	5.70	7.6%		llle	65	72	72	69	58
792C	Armstrong loam, 5 to 9 percent slopes	2.42	3.2%		llle	35	67	67	62	51
S192C2	Adair clay loam, heavy till, 5 to 9 percent slopes, moderately eroded	1.89	2.5%		llle	29	66	66	55	46
24D2	Shelby clay loam, 9 to 14 percent slopes, moderately eroded	1.69	2.3%		llle	51	70	70	56	54
W	Water	1.61	2.2%			0				
23C2	Arispe silty clay loam, 5 to 9 percent slopes, moderately eroded	0.46	0.6%		llle	62	73	73	66	68
<b>Weighted Average</b>					*	<b>30.1</b>	<b>*n 63.9</b>	<b>*n 63.1</b>	<b>*n 52.6</b>	<b>*n 49.2</b>

Soils data provided by USDA and NRCS.

Maps Provided By:



© AgriData, Inc. 2025

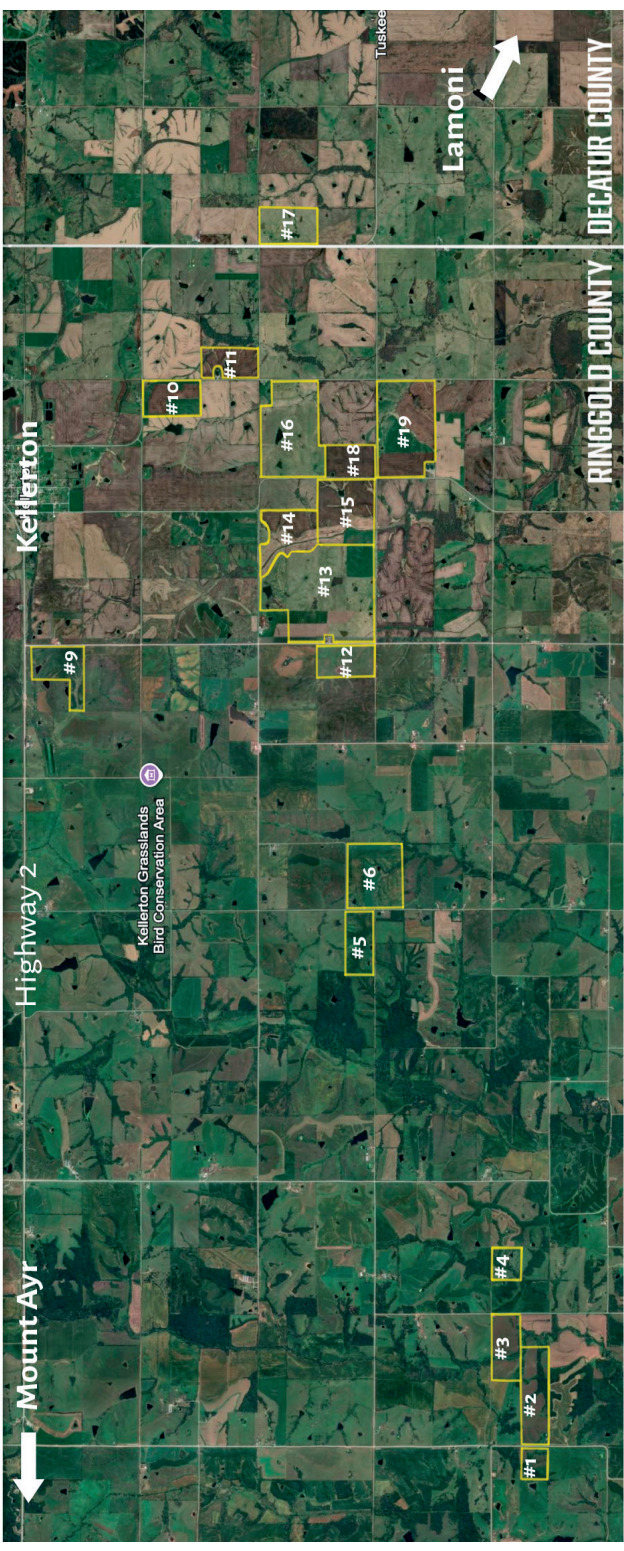
www.AgriDataInc.com

\*\*IA has updated the CSR values for each county to CSR2.

\*n: The aggregation method is "Weighted Average using all components"

\*c: Using Capabilities Class Dominant Condition Aggregation Method

\*- Non Irr Class weighted average cannot be calculated on the current soils data due to missing data.



Mount Ayr

Highway 2

Kellerton

Kellerton Grasslands  
Bird Conservation Area



#17

#10

#11

#16

#14

#13

#12

#5

#6

#15

#18

#19

Lamoni

#4

#3

#2

#1

Tuskee

RINGGOLD COUNTY

DECATUR COUNTY