

ABSOLUTE PUBLIC LAND AUCTION

2,607.67 ACRES
19 TRACTS

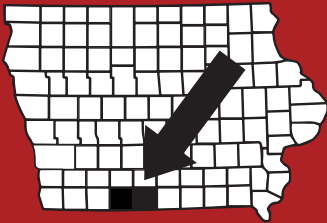


RINGGOLD & DECATUR COUNTY, IA

THURSDAY, MARCH 5TH, 2026

10:30AM

HOMESTEAD HALL/RINGGOLD CO FAIRGROUNDS
2214 US-169
MOUNT AYR, IA 5085



RICE
AUCTION COMPANY

JAKE RICE

641-202-3315

JAKE@RICEAUCTIONCO.COM

CONTACT
JIM HUGHES
REAL ESTATE
712-527-3114

ALLAN HUGHES

402-672-3621

INFO@JIMHUGHESREALESTATE.COM

www.RiceAuctionCompany.com

SELLER: HANK SMITH INC.

TRACT #14 101.94 Net Surveyed Acres

FSA INFORMATION

Farm #3218 Tract #8131

Est. Farmland: 101

Est. Cropland: 94.56

Wheat Base: TBS PLC Wheat: TBS

Corn Base: TBS PLC Corn: TBS

Grain Sorghum Base: TBS PLC Grain: TBS

Bean Base: TBS PLC Bean: TBS

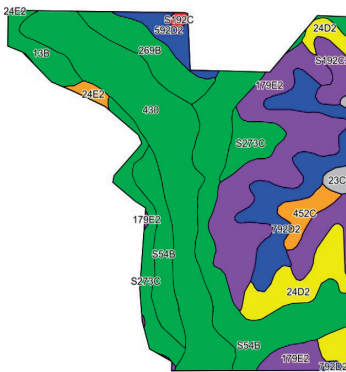
*TBS - To Be Split by FSA Office

CSRII: 54.1

Brief Legal: 22-68N-28W

Athens Township, Ringgold County, IA

Est. Taxes: \$1,830.17 or \$17.95/acre



Row Crop Farm, Adjoins Tracts 13 & 15



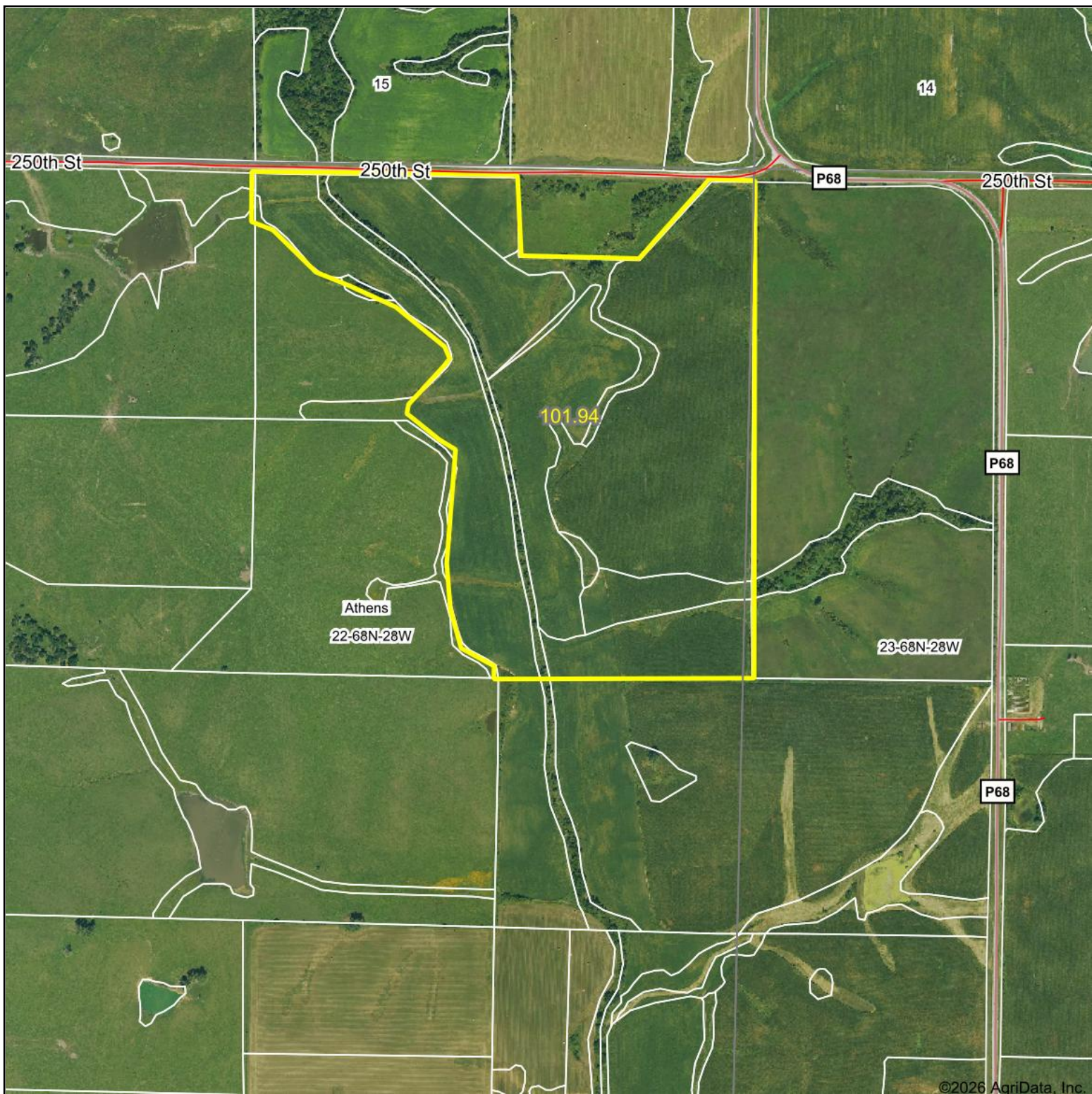
DIRECTIONS TO THE FARM:

2 miles South of Kellerton, IA on County Rd P68, then West on 250th St. Signs will be posted!

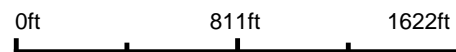


For videos or to register to bid online, visit www.RiceAuctionCompany.com

Aerial Map



Boundary Center: 40° 40' 41.33, -94° 3' 27.64



22-68N-28W
Ringgold County
Iowa



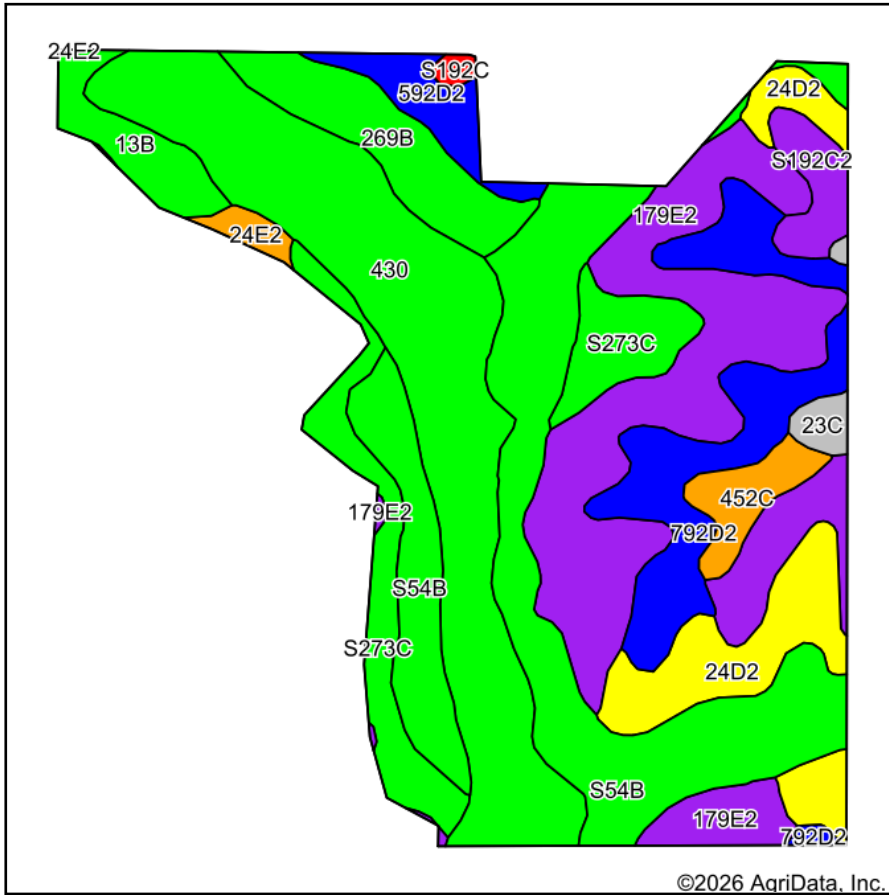
Maps Provided By:

CUSTOMIZED ONLINE MAPPING
© AgriData, Inc. 2025 www.AgriDataInc.com

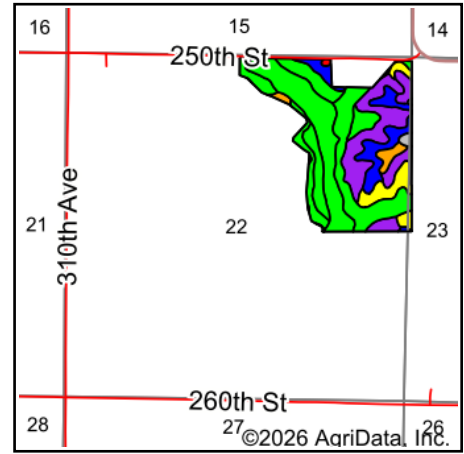
1/19/2026

Field borders provided by Farm Service Agency as of 5/21/2008.

Soils Map



Soils data provided by USDA and NRCS.



State: **Iowa**
 County: **Ringgold**
 Location: **22-68N-28W**
 Township: **Athens**
 Acres: **101.94**
 Date: **1/19/2026**



Area Symbol: IA159, Soil Area Version: 31

Code	Soil Description	Acres	Percent of field	CSR2 Legend	Non-Irr Class *c	CSR2**	*n NCCPI Overall	*n NCCPI Corn	*n NCCPI Small Grains	*n NCCPI Soybeans
430	Ackmore silt loam, heavy till, 0 to 2 percent slopes, occasionally flooded	21.89	21.5%		IIw	77	91	91	69	82
S54B	Zook silty clay loam, heavy till, 2 to 5 percent slopes, rarely flooded	20.86	20.5%		IIw	71	70	64	43	69
179E2	Gara loam, 14 to 18 percent slopes, moderately eroded	16.95	16.6%		VIe	24	62	62	49	44
792D2	Armstrong clay loam, 9 to 14 percent slopes, moderately eroded	8.66	8.5%		IVe	7	58	58	50	41
S273C	Olmitz loam, heavy till, 5 to 9 percent slopes	7.62	7.5%		IIIe	77	85	85	71	71
24D2	Shelby clay loam, 9 to 14 percent slopes, moderately eroded	7.42	7.3%		IIIe	51	70	70	56	54
269B	Humeston silty clay loam, 2 to 5 percent slopes, rarely flooded	5.03	4.9%		IIIw	71	88	88	76	80
S192C2	Adair clay loam, heavy till, 5 to 9 percent slopes, moderately eroded	4.70	4.6%		IIIe	29	66	66	55	46
13B	Olmitz-Zook-Humeston complex, 0 to 5 percent slopes	2.68	2.6%		IIw	78	79	74	54	73
592D2	Mystic clay loam, 9 to 14 percent slopes, moderately eroded	2.24	2.2%		IVe	10	67	67	61	50

Soils data provided by USDA and NRCS.

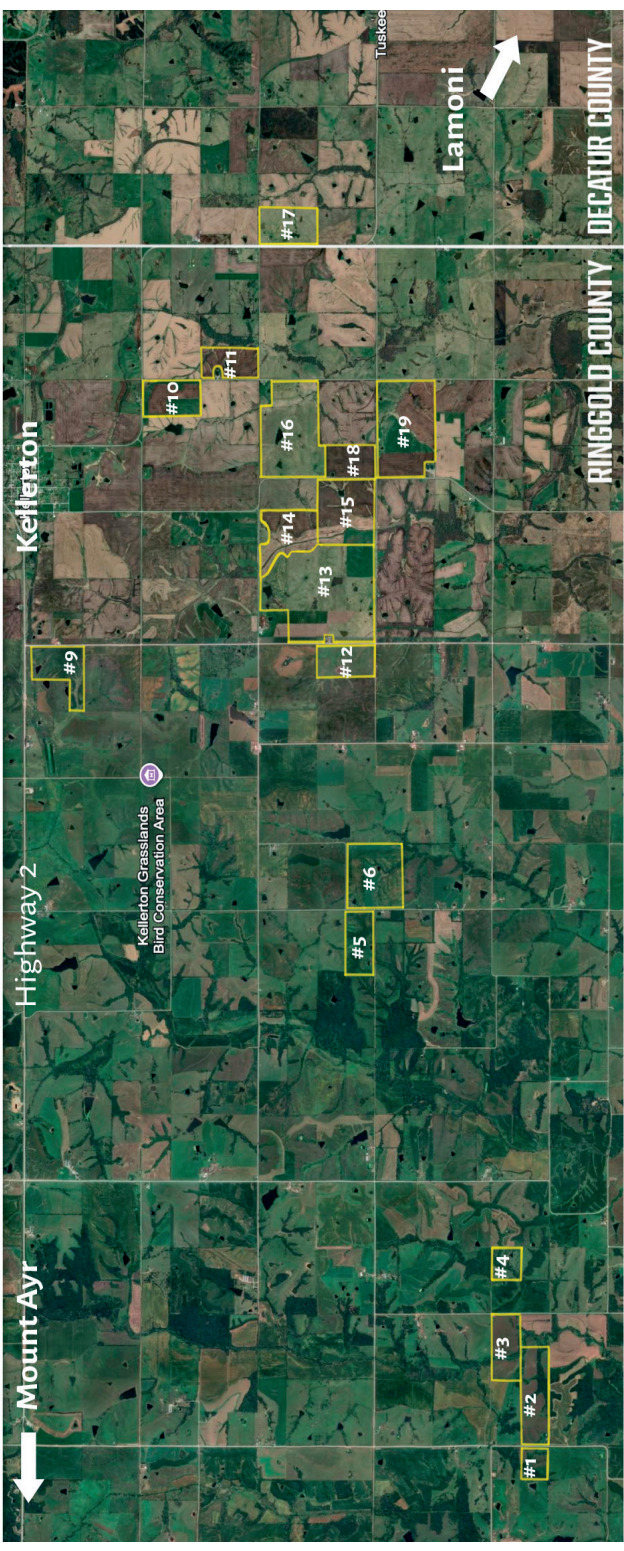


Code	Soil Description	Acres	Percent of field	CSR2 Legend	Non-Irr Class *c	CSR2**	*n NCCPI Overall	*n NCCPI Corn	*n NCCPI Small Grains	*n NCCPI Soybeans	
452C	Lineville silt loam, 5 to 9 percent slopes	2.06	2.0%		IIIe	48	75	75	60	59	
23C	Arispe silty clay loam, 5 to 9 percent slopes	0.82	0.8%		IIIe	66	78	78	73	71	
24E2	Shelby clay loam, 14 to 18 percent slopes, moderately eroded	0.72	0.7%		IVe	40	66	66	52	49	
S192C	Adair clay loam, heavy till, 5 to 9 percent slopes	0.29	0.3%		IIIe	39	71	71	64	56	
Weighted Average						3.17	54.1	*n 74.3	*n 72.9	*n 56.8	*n 63.1

**IA has updated the CSR values for each county to CSR2.

*n: The aggregation method is "Weighted Average using all components"

*c: Using Capabilities Class Dominant Condition Aggregation Method



Mount Ayr

Highway 2

Kellerton

Kellerton Grasslands
Bird Conservation Area



Tuskegee

Lamoni

#1

#2

#3

#4

#5

#6

#9

#10

#11

#12

#13

#14

#15

#16

#18

#19

#17

RINGGOLD COUNTY

DECATUR COUNTY